



RETAIL PRICE LIST

2012

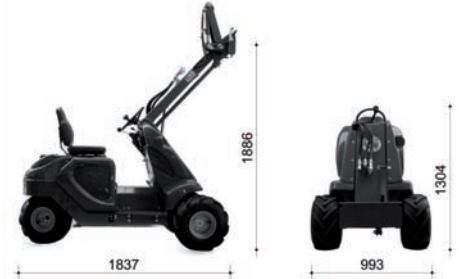


LIS M105.12_EXP

M SERIES

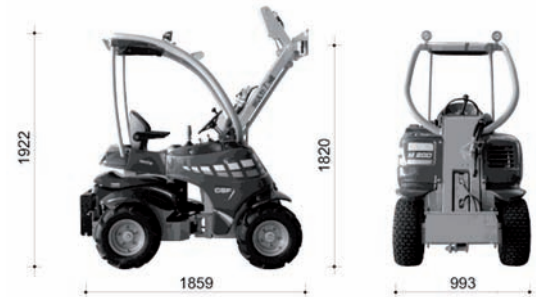
Model	Code	Price €
M 1 4 D	C 9 2 5 0 0 2	12.120,00

- Diesel engine Yanmar 12HP/9KW - 1 cylinder
- Air cooled
- Hydraulic outlet 19 l/min - 2 pumps
- 3 wheels drive with steering rear wheel
- Self-levelling system
- 3WD hydrostatic transmission with drive control
- Dynamic Block System
- Wheels: 18x9.50-8
- Dimensions (WxLxH): mm 993 x 1837 x 1304
- Weight: Kg 390



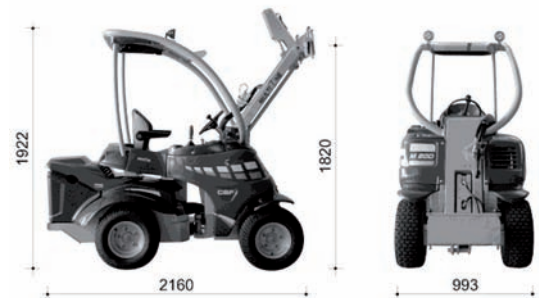
Model	Code	Price €
M 2 3 B	C 9 5 1 0 1 0	16.050,00

- Petrol engine B&S Vanguard 23HP/17KW - 2 cylinders
- Air cooled
- Hydraulic outlet 31 l/min - 3 pumps
- Roll-bar ROPS with steel roof
- Self-levelling system
- Floating boom system
- Working lights
- 4WD hydrostatic servo-assisted transmission
- Dynamic Block System
- Wheels: 20x8.00-10
- Dimensions (WxLxH): mm 993 x 1859 x 1922
- Weight: Kg 650



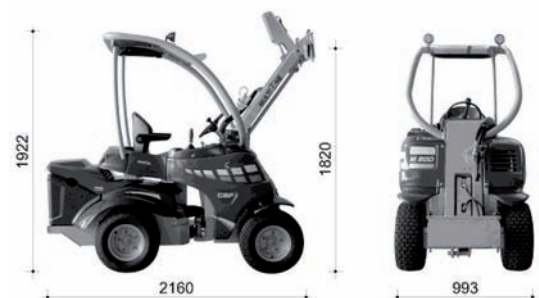
Model	Code	Price €
M 2 0 D	C 9 5 0 0 1 0	18.520,00

- Diesel engine B&S Vanguard 20HP/15KW - 3 cylinders
- Water cooled
- Hydraulic outlet 31 l/min - 3 pumps
- Roll-bar ROPS with steel roof
- Self-levelling system
- Floating boom system
- Working lights
- 4WD hydrostatic servo-assisted transmission
- Dynamic Block System
- Wheels: 20x8.00-10
- Dimensions (WxLxH): mm 993 x 2160 x 1922
- Weight: Kg 750



Model	Code	Price €
M 2 8 D	C 9 5 2 0 1 0	19.280,00

- Motore diesel B&S Vanguard 28HP/21KW - 3 cilindri
- Water cooled
- Hydraulic outlet 31 l/min - 3 pumps
- Roll-bar ROPS with steel roof
- Self-levelling system
- Floating boom system
- Working lights
- 4WD hydrostatic servo-assisted transmission
- Dynamic Block System
- Wheels: 20x8.00-10
- Dimensions (WxLxH): mm 993 x 2160 x 1922
- Weight: Kg 780



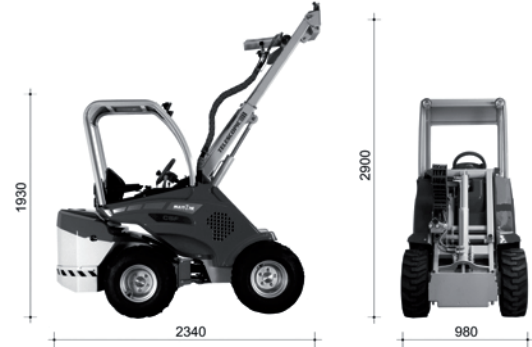
M SERIES OPTIONS

Code								Description	Price €
C	8	0	9	9	9	4	A	Attachment coupling plate (to be welded)	137,00
C	8	8	0	2	1	0	B	Trailer coupling	293,00
C	8	8	0	2	0	2	C	Backweight 12 Kg (max 3 pcs + for M14D)	59,40
C	8	8	0	2	0	1	D	Backweights kit 88 Kg for M23B (4 pcs 22 Kg + backweights coupling plate)	330,00
C	8	8	0	2	1	1	E	Heated seat	220,00
C	8	8	5	0	1	9	F	FOPS protection (not available for M14D)	770,00
C	8	8	5	2	1	1	G	Extra price for mounting garden wheels 20x8.00-10	132,00
C	8	8	0	0	9	0	H	Wheel spacer 1 cm with 5 holes, max 3 pcs for wheels (not available for M14D)	59,40
C	8	8	5	0	1	0	I	Wheel spacer kit 55 mm 5 holes, 4 pcs (not available for M14D)	396,00
C	8	8	0	0	4	0	J	Couple of snow chains for wheels 20x8.00-10 (not available for M14D)	275,00

S600 SERIES

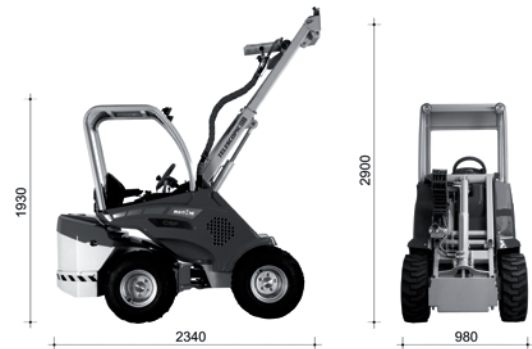
Model	Code	Price €
S 6 2 0 D T	C 9 7 5 0 0 1	22.450,00

- Diesel engine Yanmar 20HP/14KW - 3 cylinders
- Water cooled
- Hydraulic outlet 32 l/min - 3 pumps
- Telescopic boom with double hydraulic speed
- Non-overturning device
- Floating system
- Roll-bar ROPS
- Working light
- 4WD hydrostatic servoassisted transmission
- Wheels: 23x8.50-12
- Dimensions (WxLxH): mm 980 x 2340 x 1930
- Weight: Kg 1010



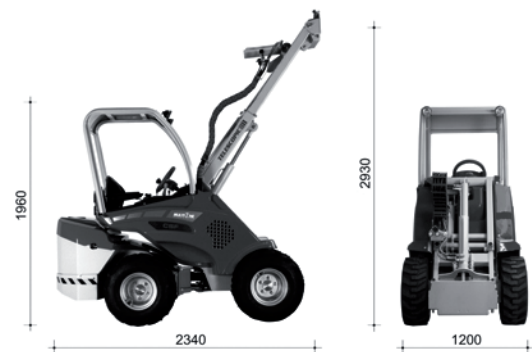
Model	Code	Price €
S 6 3 0 F	C 9 7 5 0 0 5	22.450,00

- Diesel engine Yanmar 28HP/20KW - 3 cylinders
- Water cooled
- Hydraulic outlet 42 l/min - 3 pumps
- Telescopic boom with double hydraulic speed
- Non-overturning device
- Floating system
- Roll-bar ROPS
- Working light
- 4WD hydrostatic servoassisted transmission
- Wheels: 23x8.50-12
- Dimensions (WxLxH): mm 980 x 2340 x 1930
- Weight: Kg 1010



Model	Code	Price €
S 6 3 0 D T	C 9 7 6 0 0 1	24.200,00

- Diesel engine Yanmar 28HP/20KW - 3 cylinders
- Water cooled
- Hydraulic outlet 42 l/min - 3 pumps
- Telescopic boom with double hydraulic speed
- Non-overturning device
- 8 functions joystick
- Floating system
- Roll-bar ROPS
- Working light
- 4WD hydrostatic servoassisted transmission
- Wheels: 26x12.00-12
- Dimensions (WxLxH): mm 1200 x 2340 x 1960
- Weight: Kg 1050



S600 SERIES OPTIONS

Code	Description	Price €
C 8 8 5 2 0 1 A	Self-levelling kit	660,00
C 8 8 5 2 0 2 B	Dynamic Block System	403,00
C 8 8 5 2 0 3 C	Glass cabin "Factory" assembling (with heating system)	4.400,00
C 8 8 5 2 0 4 D	Glass cabin "After Market" assembling (without heating system)	3.652,00
C 8 8 5 2 0 5 E	Heating system "After Market" assembling	1.100,00
C 8 8 5 2 1 3 F	Road lights	880,00
C 8 0 9 9 9 4 G	Attachment coupling plate (to be welded)	137,00
C 8 8 0 0 3 1 H	Attachment coupling plate for rear mounting	210,00
C 8 8 5 0 1 4 I	Trailer coupling	293,00
C 8 8 5 2 0 6 J	8 functions Joystick (only for S620DT and S630F)	902,00
C 8 0 2 1 2 0 K	Couple of back weights 184 Kg (92+92 Kg)	664,00
C 8 8 5 2 1 6 L	Heated seat	550,00
C 8 8 5 2 1 7 M	FOPS protection	440,00
C 8 8 5 0 4 1 N	Inner clothing for cabin	420,00
C 8 8 5 2 0 9 O	Extra price for mounting wheels 26x12.00-12 (on S620DT and S630F)	660,00
C 8 8 5 2 1 0 P	Extra price for mounting wheels 27x8.50-15	400,00
C 8 8 5 2 0 7 Q	Extra price for mounting garden wheels 23x8.50-12	132,00
C 8 8 5 2 0 8 R	Extra price for mounting garden wheels 26x12.00-12	132,00
C 8 8 0 0 9 0 S	Wheel spacer 10 mm with 5 holes, max. 3 pcs for wheel	59,40
C 8 8 5 0 1 0 T	Wheel spacer kit 55 mm 5 holes, 4 pcs	396,00
C 8 8 0 0 4 1 U	Couple of snow chains for wheels 23x8.50-12	325,00
C 8 8 0 0 4 2 V	Couple of snow chains for wheels 26x12.00-12 (4xC880090 for couple required)	379,00
C 8 8 0 0 4 5 W	Couple of snow chains for wheels 27x8.50-15	385,00

The following set-up are always available on stock:

- **BASIC:** Machine (C975001 or C976001), Self-levelling system (C885201), Dynamic Block System (C885202)

For different set-up, delivery within 2 months from order receipt

SL800 SERIES

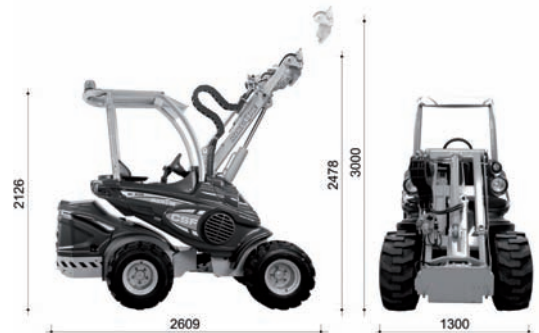
Model	Code	Price €
S L 8 3 5 D T	C 9 5 3 0 0 0	30.820,00

- Diesel engine Yanmar - 33HP/25KW - 3 cylinders
- Water cooled
- Hydraulic outlet 66 l/min - 3 pumps
- Suspension seat with armrests
- Telescopic boom
- 11 functions joystick with operator safety device
- Multifunctional digital device with programmed service
- Floating boom system
- Non-overturning device
- ROPS roll-bar arranged beforehand for cabin, with steel and Plexiglass® roof
- Working lights
- 4WD hydrostatic servoassisted transmission
- Wheels: 26x12.00-12
- Dimensions (WxLxH): mm 1300 x 2609 x 2126
- Weight: Kg 1430



Model	Code	Price €
S L 8 4 0 D T	C 9 5 4 0 0 0	32.450,00

- Diesel engine Yanmar - 40HP/30KW - 3 cylinders
- Water cooled
- Hydraulic outlet 72 l/min - 3 pumps
- Suspension seat with armrests
- Telescopic boom
- 11 functions joystick with operator safety device
- Multifunctional digital device with programmed service
- Floating boom system
- Non-overturning device
- ROPS roll-bar arranged beforehand for cabin, with steel and Plexiglass® roof
- Working lights
- 4WD hydrostatic servoassisted transmission
- Wheels: 26x12.00-12
- Dimensions (WxLxH): mm 1300 x 2609 x 2126
- Weight: Kg 1460



Model	Code	Price €
S L 8 4 0 D T P	C 9 5 4 0 5 0	34.000,00

- Diesel engine Yanmar - 40HP/30KW - 3 cylinders
- Water cooled
- Hydraulic outlet 72 l/min - 3 pumps
- Suspension seat with armrests
- Height adjustable steering wheel
- Telescopic boom
- 11 functions joystick with operator safety device
- Multifunctional digital device with programmed service
- Floating boom system
- Two drive speed (0÷10 and 0÷20 Km/h)
- Non-overturning device
- Electro-hydraulic disc brakes
- ROPS roll-bar arranged beforehand for cabin, with steel and Plexiglass® roof
- Working lights
- 4WD hydrostatic servoassisted transmission
- Wheels: 26x12.00-12
- Dimensions (WxLxH): mm 1300 x 2609 x 2126
- Weight: Kg 1460



SL800 SERIES OPTIONS

Code								Description	Price €
C	8	8	5	0	0	7	A	Self-levelling kit	605,00
C	8	8	5	0	0	6	B	Dynamic Block System	385,00
C	8	8	5	0	0	3	C	Glass cabin "Factory" assembling (with heating system)	4.400,00
C	8	8	5	0	1	2	D	Glass cabin "After Market" assembling (without heating system)	3.652,00
C	8	8	5	0	4	2	E	Smart cabin level 1 (front + right side)	700,00
C	8	8	5	0	4	3	F	Smart cabin level 2 (complete cabin)	1.400,00
C	8	8	5	0	0	1	G	Heating system "After Market" assembling	1.100,00
C	8	8	5	0	0	2	H	Road lights	990,00
C	8	8	5	0	3	3	I	Automatic locking plate	990,00
C	8	0	9	9	9	4	J	Attachment coupling plate (to be welded)	137,00
C	8	8	0	0	3	1	K	Attachment coupling plate for rear mounting	210,00
C	8	8	5	0	1	4	L	Trailer coupling	293,00
C	8	8	5	0	1	1	M	Integrated backweight 60 Kg	440,00
C	8	0	2	1	2	0	N	Couple of backweights 184 Kg (92+92 Kg)	664,00
C	8	8	5	0	1	5	O	Heated seat	440,00
C	8	8	5	0	1	8	P	FOPS protection	770,00
C	8	8	5	0	4	0	Q	Inner clothing for cabin	420,00
C	8	8	5	0	3	7	R	Air conditioning "Factory" assembling (only for SL840)	3.080,00
C	8	8	5	0	0	9	S	Left protection bar for operator	858,00
C	8	8	5	0	1	3	T	Back 3 point hydraulic lifter (C885008 required)	1.540,00
C	8	8	5	0	0	8	U	Hydraulic rear outlets	715,00
C	8	8	5	0	1	6	V	Torque divider	605,00
C	8	8	5	2	1	0	W	Extra price for mounting wheels 27x8.50-15	400,00
C	8	8	5	2	0	8	X	Extra price for mounting garden wheels 26x12.00-12	132,00
C	8	8	0	0	9	0	Y	Wheel spacer 10 mm with 5 holes, max 3 pcs for wheel	59,40
C	8	8	5	0	1	0	Z	Wheel spacer kit 55 mm 5 holes, 4 pcs	396,00
C	8	8	0	0	4	2	Aa	Couple of snow chains for wheels 26x12.00-12	379,00
C	8	8	0	0	4	5	Ab	Couple of snow chains for wheels 27x8.50-15	385,00

The following set-up are always available on stock:

- **BASIC:** Machine (C953000, C954000 or C954050), Self-levelling system (C885007), Dynamic Block System (C885006)

- **COMFORT:** Machine (C953000, C954000 or C954050), Self-levelling system (C885007), Dynamic Block System (C885006), Heating system (C885001), Road lights (C885002), Automatic locking plate (C885033)

For different set-up, delivery within 2 months from order receipt

GT SERIES

Model	Code	Price €
G T 4 5 D T	C 9 1 5 0 0 0	39.000,00

- Diesel engine Yanmar - 49HP/36KW - 4 cylinders
- Water cooled
- Hydraulic outlet 69 l/min - 3 pumps
- Telescopic boom
- Floating boom system
- 6 functions joystick
- ROPS roll-bar
- Working light
- 4WD hydrostatic servoassisted transmission
- Electro Dynamic Block System
- Swing Lock System
- Wheels: 31x15.50-15
- Dimensions (WxLxH): mm 1490 x 3128 x 2312
- Weight: Kg 1820



Model	Code	Price €
G T 5 0 D T	C 9 1 4 0 0 0	41.000,00

- Diesel engine Yanmar 49HP/36KW - 4 cylinders
- Water cooled
- Hydraulic outlet - 3 pumps
- 1 Electronic pump 63 l/min
- + 1 Gear pump 50 l/min
- Telescopic boom
- Floating boom system
- 8 functions joystick
- ROPS roll-bar
- Working light
- 4WD hydrostatic servoassisted transmission
- Electro Dynamic Block System
- Swing Lock System
- Wheels: 31x15.50-15
- Dimensions (WxLxH): mm 1490 x 3128 x 2312
- Weight: Kg 1820



Model	Code	Price €
G T 7 0 D T	C 9 1 6 0 0 0	43.000,00

- Diesel engine Yanmar - 49HP/36KW - 4 cylinders
- Water cooled
- Hydraulic outlet 50 l/min - 2 pumps
- Telescopic boom
- Floating boom system
- 6 functions joystick
- ROPS roll-bar
- Working light
- 4WD hydrostatic servoassisted transmission
- Electro Dynamic Block System
- Swing Lock System
- Wheels: 31x15.50-15
- Dimensions (WxLxH): mm 1490 x 3428 x 2302
- Weight: Kg 1880



GT SERIES OPTIONS

Code								Description	Price €
C	8	8	0	0	2	1	A	Self-levelling kit	880,00
C	8	0	2	8	3	5	B	Glass cabin with heating system	5.500,00
C	8	0	2	0	6	2	C	Road lights for cabin	466,00
C	8	0	2	0	4	2	D	Road lights for ROPS roll-bar	466,00
C	8	0	9	9	9	4	E	Attachment coupling plate (to be welded)	137,00
C	8	8	0	0	3	1	F	Attachment coupling plate for rear mounting	210,00
C	8	8	0	0	0	1	G	Attachment coupling plate Bobcat type	823,00
C	8	0	2	0	4	0	H	Trailer coupling (automotive/agricultural)	293,00
C	8	0	2	0	4	3	I	FOPS protection	883,00
C	8	0	2	1	2	0	J	Couple of back weights 184 Kg (92+92 Kg)	664,00
C	8	0	2	1	2	1	K	Couple of back weights 484 Kg (242+242 Kg)	1.413,00
C	8	8	0	0	3	0	L	Back 3 point hydraulic lifter (C802101 required)	1.424,00
C	8	0	2	1	0	1	M	Hydraulic rear outlets (double+single effect)	614,00
C	8	8	5	2	1	2	N	Extra price for mounting garden wheels 29x12.50-15	132,00
C	8	8	0	0	9	0	O	Wheel spacer 10 mm with 5 holes, max 3 pcs for wheel	59,40
C	8	8	0	0	4	3	P	Couple of snow chains for wheels 31x15.50-15	370,00

GT900 SERIES

Model	Code	Price €
G T 9 5 0 D T	C 9 8 0 0 0 0	39.470,00

- Diesel engine Yanmar - 49HP/36KW - 4 cylinders
- Water cooled
- Two drive speed (0÷12 and 0÷25 Km/h)
- Hydraulic outlet 80 l/min - 3 pumps
- Suspension seat with armrests and safety belts
- Telescopic boom
- Floating boom system
- 11 functions joystick with safety system
- Multifunctional digital device with programmed service
- Non-overturning device
- Electro-hydraulic disc brakes
- ROPS roll-bar arranged beforehand for cabin, with steel and Plexiglas® roof
- Working light
- 4WD hydrostatic servoassisted transmission with Dynamic Block System
- Wheels: 31x15.50-15
- Dimensions (WxLxH): mm 1490X2900X2176
- Weight: Kg 1675



GT900 SERIES OPTIONS

Code	Description	Price €
C 8 8 5 0 3 0 A	Self-levelling kit	715,00
C 8 8 5 0 0 3 B	Glass cabin "Factory" assembling (with heating system)	4.400,00
C 8 8 5 0 1 2 C	Glass cabin "After Market" assembling (without heating system)	3.652,00
C 8 8 5 0 4 2 D	Smart cabin level 1 (front + right side)	700,00
C 8 8 5 0 4 3 E	Smart cabin level 2 (complete cabin)	1.400,00
C 8 8 5 0 0 1 F	Heating system kit "After-Market" assembling	1.100,00
C 8 8 5 0 3 2 G	Road lights	1.100,00
C 8 8 5 0 3 3 H	Automatic locking plate	990,00
C 8 0 9 9 9 4 I	Attachment coupling plate (to be welded)	137,00
C 8 8 0 0 3 1 J	Attachment coupling plate for rear mounting	210,00
C 8 8 5 0 1 4 K	Trailer coupling	293,00
C 8 8 5 0 3 1 L	Integrated back weight 100 Kg	660,00
C 8 8 5 0 3 4 M	Couple of back weights 484 Kg (242+242 Kg)	1.430,00
C 8 8 5 0 1 5 N	Heated seat	440,00
C 8 8 5 0 1 8 O	FOPS protection	770,00
C 8 8 5 0 4 0 P	Inner clothing for cabin	420,00
C 8 8 5 0 3 6 Q	Air conditioning "Factory" assembling	3.080,00
C 8 8 5 0 0 9 R	Safety bar for operator	858,00
C 8 8 5 2 1 0 S	Extra price for mounting wheels 27x8.50-15	400,00
C 8 8 5 2 1 2 T	Extra price for mounting garden wheels 29x12.50-12	132,00
C 8 8 0 0 9 0 U	Wheel spacer 1 cm with 5 holes, max 3 pcs for wheel	59,40
C 8 8 0 0 4 4 V	Couple of snow chains for wheels 31x15.50-15 (only for GT950)	473,00
C 8 8 0 0 4 5 W	Couple of snow chains for wheels 27x8.50-15	385,00

The following set-up are always available on stock

- **BASIC:** Machine (C980000), Self-levelling system (C885030)

- **COMFORT:** Machine (C980000), Self-levelling system (C885030), Heating system (C885001), Road lights (C885032), Automatic locking plate (C885033)

For different set-up, delivery within 2 months from order receipt

STAR

Model	Code	Price €
S T A R	C 9 3 0 0 0 4	66.000,00

- Diesel engine Yanmar
- 4WD Hydrostatic transmission
- Two drive speed (13/26 Km/h)
- Cabin with frontal balancing glass
- Hydraulic outlet for tools 60+60 l/min
- Fuel tank 58 l
- Front wheels: Garden 29x12.50-15
- Rear wheels: Garden: 23x10.50-12
- Dimensions (WxLxH): mm 1786 x 3183 x 2146
- Weight without grass collector: Kg 1930
- Weight with grass collector: Kg 2280



STAR OPTIONS

Code	Description	Price €
C 8 8 7 0 1 0 A	Air conditioning for cabin	3.475,00

Version with grass collector mower kit



Code	Description	Price €
C 8 9 7 0 0 5 B	Pickup fan + container kit	9.250,00
C 8 9 7 0 0 1 C	205 cm front deck with collecting system (C897005 required)	9.250,00

Version with rear discharge mower and mulching system

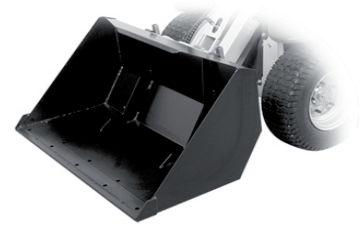
Code	Description	Price €
C 8 9 7 0 0 2 D	205 cm front deck with rear discharge and mulching system	7.860,00
C 8 9 7 0 0 6 E	338 cm front deck with rear discharge and mulching system	15.670,00

Version with rear discharge mower and mulching kit, front side decks with working width of 390 cm

Code	Description	Price €
C 8 9 7 0 0 7 F	180 cm front deck with rear discharge and mulching system	6.645,00
C 8 9 7 0 0 3 G	120 cm right deck with rear discharge and mulching system with lifter	5.213,00
C 8 9 7 0 0 4 H	120 cm left deck with rear discharge and mulching system with lifter	5.213,00

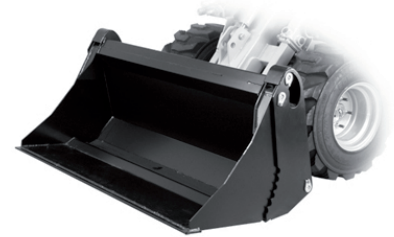
ATTACHMENTS *standard*

● = very compatible ○ = compatible



SAND BUCKET

Code	Description	M14	M20 M23 M28	S620 S630	SL835 SL840	GT45 GT50 GT70 GT950	Price €
C 8 9 5 0 2 1	Sand bucket 90 cm – Volume 100 l with blade (4d)	●					495,00
C 8 9 0 0 0 6	Sand bucket 110 cm – Volume 205 l with blade (6d)		●	●	○	○	605,00
C 8 9 0 0 0 5	Sand bucket 130 cm – Volume 240 l with blade (8d)		○	●	●		682,00
C 8 9 0 0 0 4	Sand bucket 150 cm – Volume 280 l with blade (9d)			○	○	●	737,00
C 8 9 0 0 0 7	(d) = Bolt-on tooth kit (each)	●	●	●	●	●	19,80



MULTI PURPOSE-BUCKET (4 IN 1)

Code	Description	M14	M20 M23 M28	S620 S630	SL835 SL840	GT45 GT50 GT70 GT950	Price €
C 8 9 0 0 7 0	Multi-purpose bucket (4 in 1) 100 cm Volume 100 l - with blade (6d)		●				1.886,00
C 8 9 0 0 7 4	Multi-purpose bucket (4 in 1) 130 cm Volume 180 l - with blade (8d)			●	●	●	2.161,00
C 8 9 0 0 7 2	Multi-purpose bucket (4 in 1) 150 cm Volume 210 l - with blade (9d)			○	○	●	2.614,00
C 8 9 0 0 0 7	(d) = Bolt-on tooth kit (each)	●	●	●	●	●	19,80



GRAPPLE BUCKET

Code	Description	M14	M20 M23 M28	S620 S630	SL835 SL840	GT45 GT50 GT70 GT950	Price €
C 8 9 0 0 6 0	Grapple bucket 100 cm	○	●	●	○	○	1.144,00
C 8 9 0 0 6 1	Grapple bucket 130 cm		○	●	●	○	1.364,00

ATTACHMENTS *standard*

● = very compatible O = compatible



HIGH TIP BUCKET

Code	Description	M14	M20 M23 M28	S620 S630	SL835 SL840	GT45 GT50 GT70 GT950	Price €
C 8 9 0 0 9 0	High tip bucket 100 cm Volume 210 l		●	●	O	O	1.474,00
C 8 9 0 0 9 2	High tip bucket 130 cm Volume 280 l			●	●	O	1.694,00



HIGH VOLUME BUCKET

Code	Description	M14	M20 M23 M28	S620 S630	SL835 SL840	GT45 GT50 GT70 GT950	Price €
C 8 9 0 0 5 3	High volume bucket 110 cm Volume 400 l		●	●	O		770,00
C 8 9 0 0 5 4	High volume bucket 130 cm Volume 480 l		O	●	●	O	858,00
C 8 9 0 0 5 2	High volume bucket 150 cm Volume 550 l			O	O	●	1.045,00



LIFTING TROLLEY *

Code	Description	M14	M20 M23 M28	S620 S630	SL835 SL840	GT45 GT50 GT70 GT950	Price €
C 8 9 0 4 8 0	Lifting trolley, Max. height 270 cm Max. loading 1500 Kg			●	●	●	3.388,00

* We suggest to place backweights 92+92 Kg on the machine

ATTACHMENTS *standard*

● = very compatible ○ = compatible



PALLET FORK

Code	Description	M14	M20 M23 M28	S620 S630	SL835 SL840	GT45 GT50 GT70 GT950	Price €
C 8 9 5 1 2 0	Pallet fork, lifting capacity 250 Kg (P=80 cm)	●	●				550,00
C 8 9 0 3 0 0	Pallet fork, lifting capacity 1000 Kg (P=90 cm)		●	●	●	●	880,00
C 8 9 0 3 0 5	Pallet fork, lifting capacity 1200 Kg (P=110 cm)		●	●	●	●	1.045,00
C 8 9 0 3 1 0	Pallet fork, lifting capacity 2000 Kg (P=120 cm)		●	●	●	●	1.320,00



HYDRAULIC CLAMP FOR PALLET FORK

Code	Description	M14	M20 M23 M28	S620 S630	SL835 SL840	GT45 GT50 GT70 GT950	Price €
C 8 9 0 5 8 5	Hydraulic clamp for pallet fork (C890300 or C890305 or C890310) required		●	●	●	●	1.034,00



LIFTING POLE

Code	Description	M14	M20 M23 M28	S620 S630	SL835 SL840	GT45 GT50 GT70 GT950	Price €
C 8 9 0 7 1 0	Lifting pole	●	●	●	●	●	770,00
C 8 9 0 7 1 2	Telescopic lifting pole extension 60 cm		●	●	●	●	1.650,00

ATTACHMENTS *agriculture*

● = very compatible ○ = compatible



RIPPER

Code	Description	M14	M20 M23 M28	S620 S630	SL835 SL840	GT45 GT50 GT70 GT950	Price €
C 8 9 1 2 2 0	Ripper 50 cm	●	●	●	●	●	440,00



BEE HOUSE ELEVATOR WITH HOLDER, FORKS

Code	Description	M14	M20 M23 M28	S620 S630	SL835 SL840	GT45 GT50 GT70 GT950	Price €
C 8 9 0 6 9 0	Bee house elevator with holder L=105 cm, H=90/160 cm	●	●	●	●	●	2.244,00
C 8 9 0 6 9 1	Bee house elevator with holder L=105 cm, H=135/240 cm		●	●	●	●	2.464,00



HEAVY DUTY SILAGE FORK

Code	Description	M14	M20 M23 M28	S620 S630	SL835 SL840	GT45 GT50 GT70 GT950	Price €
C 8 9 5 0 6 1	Silage fork 80 cm	●	○	○	○	○	1.100,00
C 8 9 0 3 5 0	Heavy duty silage fork 90 cm		●	○	○	○	1.298,00
C 8 9 0 3 5 1	Heavy duty silage fork 110 cm		●	●	○	○	1.474,00
C 8 9 0 3 5 2	Heavy duty silage fork 120 cm		○	●	●	○	1.584,00
C 8 9 0 3 5 3	Heavy duty silage fork 150 cm		○	●	●	●	1.804,00

ATTACHMENTS *agriculture*

● = very compatible ○ = compatible



LONG TEETH MANURE FORK

Code	Description	M14	M20 M23 M28	S620 S630	SL835 SL840	GT45 GT50 GT70 GT950	Price €
C 8 9 0 3 8 0	Long teeth manure fork	○	●	●	●	●	770,00



ROUND BALE FORK

Code	Description	M14	M20 M23 M28	S620 S630	SL835 SL840	GT45 GT50 GT70 GT950	Price €
C 8 9 0 4 0 0	Round bale fork	●	●	●	●	●	550,00



BALE GRAB

Code	Description	M14	M20 M23 M28	S620 S630	SL835 SL840	GT45 GT50 GT70 GT950	Price €
C 8 9 0 4 1 0	Bale grab		●	●	●	●	2.024,00



FEED DESPENSER

Code	Description	M14	M20 M23 M28	S620 S630	SL835 SL840	GT45 GT50 GT70 GT950	Price €
C 8 9 0 4 2 0	Feed dispenser	●	●	●	●	●	1.694,00

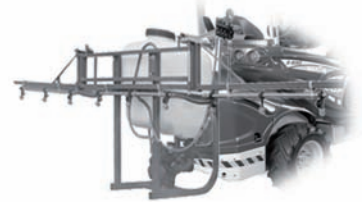
ATTACHMENTS *agriculture*

● = very compatible ○ = compatible



SILAGE CUTTING BUCKET

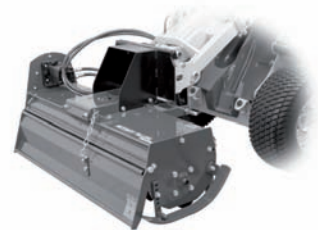
Code	Description	M14	M20 M23 M28	S620 S630	SL835 SL840	GT45 GT50 GT70 GT950	Price €
C 8 9 1 0 5 0	Silage cutting bucket 100 cm			●	●	●	2.244,00
C 8 9 1 0 5 1	Silage cutting bucket 120 cm			●	●	●	2.794,00



SPRAYING BAR *

Code	Description	M14	M20 M23 M28	S620 S630	SL835 SL840	GT45 GT50 GT70 GT950	Price €
C 8 9 0 7 4 0	Spraying bar 450 cm capacity 100 l		●	●	●	●	2.024,00

* for rear mounting the machine must be set-up with C885013+C885008 or C880030+C802101



ROTARY TILLER *

Code	Description	M14	M20 M23 M28	S620 S630	SL835 SL840	GT45 GT50 GT70 GT950	Price €
C 8 9 0 4 9 0	Rotary tiller 105 cm		●	●	●	●	2.464,00
C 8 9 0 4 9 1	Rotary tiller 125 cm		●	●	●	●	3.014,00
C 8 9 0 4 9 2	Rotary tiller 145 cm			●	●	●	3.234,00

* for rear mounting the machine must be set-up with C885013+C885008 or C880030+C802101

ATTACHMENTS *agriculture*

● = very compatible O = compatible



POWER RAKE

Code	Description	M14	M20 M23 M28	S620 S630	SL835 SL840	GT45 GT50 GT70 GT950	Price €
C 8 9 0 6 8 5	Power rake 135 cm		●	●	●	O	5.200,00
C 8 9 0 6 8 6	Power rake 155 cm		O	O	O	●	5.600,00



HORSE ARENA HARROW *

Code	Description	M14	M20 M23 M28	S620 S630	SL835 SL840	GT45 GT50 GT70 GT950	Price €
C 8 9 1 2 3 0	Horse arena harrow 160 cm		●	●	●	●	6.000,00

* The machine must be set-up with C880210 or C885014 or C882040

ROTARY PLOUGH

Code	Description	M14	M20 M23 M28	S620 S630	SL835 SL840	GT45 GT50 GT70 GT950	Price €
C 8 9 1 2 4 0	Rotary plough		●	●	●		3.800,00



VIBRATING CLAMP FOR FRUIT TREES WITH UMBRELLA

Code	Description	M14	M20 M23 M28	S620 S630	SL835 SL840	GT45 GT50 GT70 GT950	Price €
C 8 9 1 0 0 0	Vibrating clamp for fruit trees and olives with umbrella ø 6 mt					●	17.050,00

ATTACHMENTS *construction*

● = very compatible O = compatible



ANGLE BLADE

Code	Description	M14	M20 M23 M28	S620 S630	SL835 SL840	GT45 GT50 GT70 GT950	Price €
C 8 9 0 4 7 0	Angle blade 140 cm – Slewing angle $\pm 30^\circ$	O	O	●	●	●	1.254,00



GRADER

Code	Description	M14	M20 M23 M28	S620 S630	SL835 SL840	GT45 GT50 GT70 GT950	Price €
C 8 9 0 1 0 5	Grader 210 cm with hydraulic controls					●	13.020,00
C 8 9 0 1 0 6	Laser twin angle (C890105 required)					●	5.566,00



CEMENT MIXER

Code	Description	M14	M20 M23 M28	S620 S630	SL835 SL840	GT45 GT50 GT70 GT950	Price €
C 8 9 0 1 3 0	Cement mixer 250 l	O	●	●	●	●	1.694,00



CONCRETE MIXING BUCKET

Code	Description	M14	M20 M23 M28	S620 S630	SL835 SL840	GT45 GT50 GT70 GT950	Price €
C 8 9 0 1 4 0	Concrete mixing bucket 200 l			●	●	●	4.587,00
C 8 9 0 1 4 1	Concrete mixing bucket 250 l				●	●	5.709,00

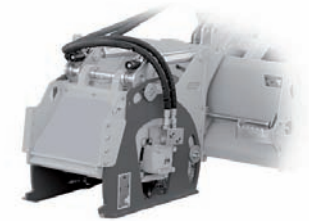
ATTACHMENTS *construction*

● = very compatible ○ = compatible



MATERIAL PAVER

Code	Description	M14	M20 M23 M28	S620 S630	SL835 SL840	GT45 GT50 GT70 GT950	Price €
C 8 9 0 1 5 0	Material paver L=100 cm Volume 400 l			●	●	●	4.994,00



FLOW PLANER

Code	Description	M14	M20 M23 M28	S620 S630	SL835 SL840	GT45 GT50 GT70 GT950	Price €
C 8 9 0 1 6 0	Flow planer with milling drum 35 cm				●	●	13.870,00
C 8 9 0 1 6 2	Cutting disc for flow planer 7,5x15 cm				●	●	2.640,00



HYDRAULIC HAMMER

Code	Description	M14	M20 M23 M28	S620 S630	SL835 SL840	GT45 GT50 GT70 GT950	Price €
C 8 9 0 1 8 1	Hydraulic hammer 62 Kg		○	●	●	●	3.960,00
C 8 9 0 1 8 0	Hydraulic hammer 90 Kg			●	●	●	4.994,00

ATTACHMENTS *construction*

● = very compatible ○ = compatible



VIBRATING ROLLER

Code	Description	M14	M20 M23 M28	S620 S630	SL835 SL840	GT45 GT50 GT70 GT950	Price €
C 8 9 0 2 6 0	Vibrating roller 100 cm		●	●	○	○	9.180,00
C 8 9 0 2 6 1	Vibrating roller 120 cm			●	●	○	10.930,00
C 8 9 0 2 6 2	Vibrating roller 150 cm			○	●	●	12.430,00



CUTTER CRUSHER

Code	Description	M14	M20 M23 M28	S620 S630	SL835 SL840	GT45 GT50 GT70 GT950	Price €
C 8 9 1 2 5 0	Cutter crusher			●	●	●	18.000,00



CRUSHING BUCKET

Code	Description	M14	M20 M23 M28	S620 S630	SL835 SL840	GT45 GT50 GT70 GT950	Price €
C 8 9 1 2 6 0	Crushing bucket				●	●	17.000,00

ATTACHMENTS *maintenance*

● = very compatible ○ = compatible



ROTARY BRUSH

Code	Description	M14	M20 M23 M28	S620 S630	SL835 SL840	GT45 GT50 GT70 GT950	Price €
C 8 9 5 0 0 0	Rotary brush L=100 cm	●	●	●	○	○	2.024,00
C 8 9 5 0 0 1	Waste box for rotary brush L=100 cm	●	●	●	○	○	385,00
C 8 9 0 2 2 0	Rotary brush L=120 cm		○	●	●	○	2.244,00
C 8 9 0 2 2 1	Waste box for rotary brush L=120 cm		○	●	●	○	440,00
C 8 9 0 2 2 2	Humidification kit for rotary brush L=120 cm		○	●	●	○	1.320,00
C 8 9 0 2 2 3	Rotary brush L=150 cm		○	●	●	●	2.794,00
C 8 9 0 2 2 4	Waste box for rotary brush L=150 cm		○	●	●	●	495,00
C 8 9 0 2 2 5	Humidification kit for rotary brush L=150 cm		○	●	●	●	1.540,00
C 8 9 0 2 2 6	Side brush for rotary brush 120/150 cm		○	●	●	●	1.831,00



ROTARY BRUSH FOR SNOW AND LEAVES

Code	Description	M14	M20 M23 M28	S620 S630	SL835 SL840	GT45 GT50 GT70 GT950	Price €
C 8 9 0 2 4 0	Rotary brush for snow and leaves L=110 cm	○	●	●	○	○	2.794,00
C 8 9 0 2 4 1	Rotary brush for snow and leaves L=130 cm		●	●	●	○	3.344,00
C 8 9 0 2 4 2	Rotary brush for snow and leaves L=160 cm		○	●	●	●	3.894,00

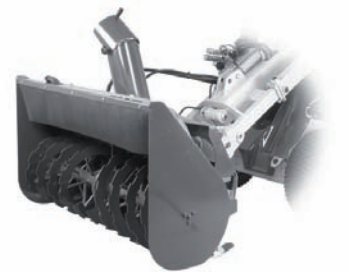
ATTACHMENTS *maintenance*

● = very compatible ○ = compatible



SNOW PLOUGH

Code	Description	M14	M20 M23 M28	S620 S630	SL835 SL840	GT45 GT50 GT70 GT950	Price €
C 8 9 0 4 7 6	Snow plough 140 cm – slewing angle $\pm 30^\circ$	○	●	●	●	●	2.134,00
C 8 9 0 4 7 5	Snow plough 180 cm – slewing angle $\pm 30^\circ$		○	●	●	●	2.244,00



SNOW TURBINE

Code	Description	M14	M20 M23 M28	S620 S630	SL835 SL840	GT45 GT50 GT70 GT950	Price €
C 8 9 5 1 0 0	Snow turbine 80 cm single stage, with mechanic adjustment	●	○				2.216,00
C 8 9 0 4 5 0	Snow turbine 100 cm double stage, with mechanic adjustment		●	○			3.597,00
C 8 9 0 4 5 7	Heavy duty snow turbine 100 cm double stage, with electric adjustment		●	●	○	○	4.250,00
C 8 9 0 4 5 4	Snow turbine 120 cm double stage, with electric adjustment			●	●	●	4.202,00
C 8 9 0 4 5 8	Heavy duty snow turbine 120 cm double stage, with electric adjustment			●	●	●	5.100,00
C 8 9 0 4 5 5	Snow turbine 140 cm double stage, with electric adjustment			●	●	●	6.534,00
C 8 9 0 4 6 0	Heavy duty snow turbine 160 cm double stage, with electric adjustment			○	●	●	7.240,00



SAND/SALT SPREADER

Code	Description	M14	M20 M23 M28	S620 S630	SL835 SL840	GT45 GT50 GT70 GT950	Price €
C 8 9 0 1 7 6	Centrifugal sand/salt spreader volume 250 l		●	●	●	●	2.530,00

ATTACHMENTS *maintenance*

● = very compatible ○ = compatible



TRAILER

Code	Description	M14	M20 M23 M28	S620 S630	SL835 SL840	GT45 GT50 GT70 GT950	Price €
C 8 9 0 7 7 0	Tipping trailer 115x150x30 cm		●	●	●	●	1.980,00



HYDROCLEANER

Code	Description	M14	M20 M23 M28	S620 S630	SL835 SL840	GT45 GT50 GT70 GT950	Price €
C 8 9 1 2 0 0	Hydrocleaner 175 bar with 200 l tank		●	●	●	●	2.794,00



SOLAR PANEL WASHER

Codice	Descrizione	M14	M20 M23 M28	S620 S630	SL835 SL840	GT45 GT50 GT70 GT950	Prezzo €
C 8 9 1 2 7 0	Solar panel washer (only for GT950)					●	20.000,00



STAKE PLANTER

Code	Description	M14	M20 M23 M28	S620 S630	SL835 SL840	GT45 GT50 GT70 GT950	Price €
C 8 9 0 7 8 0	Stake planter		●	●	●	●	5.610,00

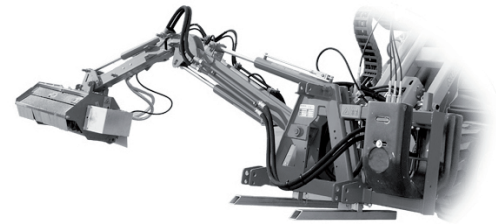
ATTACHMENTS *green care*

● = very compatible ○ = compatible



FRONT FLAIL MOWER

Code	Description	M14	M20 M23 M28	S620 S630	SL835 SL840	GT45 GT50 GT70 GT950	Price €
C 8 9 5 0 7 0	Front flail mower L=100 cm	●					2.640,00
C 8 9 0 5 9 0	Front flail mower L=100 cm		●	●	○	○	2.689,00
C 8 9 0 5 9 1	Front flail mower L=120 cm		○	●	●	○	2.926,00
C 8 9 0 5 9 2	Front flail mower L=150 cm		○	○	○	●	3.916,00



SIDE FLAIL MOWER

Code	Description	M14	M20 M23 M28	S620 S630	SL835 SL840	GT45 GT50 GT70 GT950	Price €
C 8 9 0 6 0 0	Side arm for flail mower, extension 3 mt (C890601 or C890602 required)			●	●	●	7.490,00
C 8 9 0 6 0 1	Flail mower 80 cm for side arm			●	●	●	2.420,00
C 8 9 0 6 0 2	Flail mower 100 cm for side arm			●	●	●	2.750,00



TORNADO – LAWN MOWER WITH COLLECTING SYSTEM

Code	Description	M14	M20 M23 M28	S620 S630	SL835 SL840	GT45 GT50 GT70 GT950	Price €
C 8 9 0 6 4 2	Tornado 120 for M28D only Lawn mower 120 cm, with collecting box		●				4.378,00
C 8 9 0 6 4 0	Tornado 120 Lawn mower 120 cm, with collecting box			●	●	●	4.378,00
C 8 9 0 6 4 1	Tornado 150 Lawn mower 150 cm, with collecting box			●	●	●	4.950,00

ATTACHMENTS *green care*

● = very compatible ○ = compatible



LAWN MOWER

Code	Description	M14	M20 M23 M28	S620 S630	SL835 SL840	GT45 GT50 GT70 GT950	Price €
C 8 9 5 0 8 0	Lawn mower 100 cm with mulching system	●	●				1.760,00
C 8 9 0 6 2 0	Lawn mower 120 cm with lateral discharge		●	●	●	●	2.563,00
C 8 9 0 6 2 1	Rear discharge kit for lawn mower 120 cm		●	●	●	●	451,00
C 8 9 0 6 2 2	Mulching kit for lawn mower 120 cm		●	●	●	●	599,00
C 8 9 0 6 2 3	Lawn mower 150 cm with lateral discharge			●	●	●	2.871,00
C 8 9 0 6 2 4	Rear discharge kit for lawn mower 150 cm			●	●	●	489,00
C 8 9 0 6 2 5	Mulching kit for lawn mower 150 cm			●	●	●	660,00
C 8 9 0 6 2 6	Lawn mower 180 cm with lateral discharge			●	●	●	3.542,00
C 8 9 0 6 2 7	Rear discharge kit for lawn mower 180 cm			●	●	●	511,00
C 8 9 0 6 2 8	Mulching kit for lawn mower 180 cm			●	●	●	671,00



SWINGING MOWER DECK

Code	Description	M14	M20 M23 M28	S620 S630	SL835 SL840	GT45 GT50 GT70 GT950	Price €
C 8 9 1 2 8 0	Swinging mower deck diametre 80 cm		○	●	●	●	6.000,00

ATTACHMENTS *green care*

● = very compatible ○ = compatible



CUTTING BAR

Code	Description	M14	M20 M23 M28	S620 S630	SL835 SL840	GT45 GT50 GT70 GT950	Price €
C 8 9 0 6 5 0	Front cutting bar L=167 cm	●	●	●	●	●	4.444,00



CLIPPING MACHINE

Code	Description	M14	M20 M23 M28	S620 S630	SL835 SL840	GT45 GT50 GT70 GT950	Price €
C 8 9 0 6 6 1	Clipping machine with electric adjustment (max. diametre 1 cm)	●	●	●	●	●	3.498,00
C 8 9 0 6 6 2	Clipping machine with electric adjustment (max. diametre 3 cm)	●	●	●	●	●	4.620,00



VASE CLAMP

Code	Description	M14	M20 M23 M28	S620 S630	SL835 SL840	GT45 GT50 GT70 GT950	Price €
C 8 9 0 7 2 0	Hydraulic clamp for vases opening: min. 40 cm / max. 100 cm	●	●	●	●	●	2.684,00
C 8 9 0 7 2 1	Hydraulic clamp for plastic vases opening: min. 40 cm / max. 100 cm	●	●	●	●	●	2.574,00
C 8 9 0 7 2 2	Pot rim lifter opening: min. 40 cm / max. 100 cm	●	●	●	●	●	1.430,00

ATTACHMENTS *landscaping*

● = very compatible ○ = compatible



LEVELLER

Code	Description	M14	M20 M23 M28	S620 S630	SL835 SL840	GT45 GT50 GT70 GT950	Price €
C 8 9 0 1 0 0	Leveller 150x105 cm		●	●	●	●	825,00



STONEBURIER *

Code	Description	M14	M20 M23 M28	S620 S630	SL835 SL840	GT45 GT50 GT70 GT950	Price €
C 8 9 0 6 8 0	Stoneburier 100 cm with roller 120 cm		●	●	●	●	4.884,00
C 8 9 0 6 8 1	Stoneburier 125 cm with roller 140 cm			●	●	●	5.214,00

* C885013+C885008 or C880030+C802101 required, to be placed on the machine



AUGER TREE

Code	Description	M14	M20 M23 M28	S620 S630	SL835 SL840	GT45 GT50 GT70 GT950	Price €
C 8 9 0 8 1 0	Auger tree, drive unit (C890811 or C890812 required)		●	●	●	●	3.938,00
C 8 9 0 8 1 1	Cutting head diametre 80 cm for auger tree		●	●	●	●	2.531,00
C 8 9 0 8 1 2	Cutting head diametre 100 cm for auger tree		●	●	●	●	2.614,00

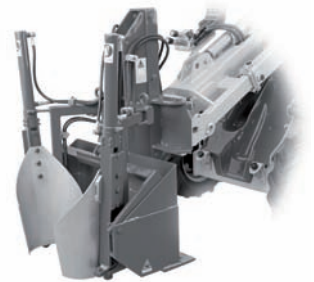
ATTACHMENTS *landscaping*

● = very compatible ○ = compatible



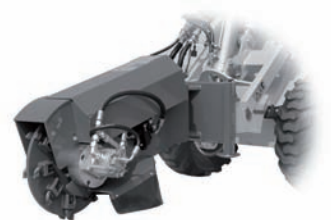
STUMP BUSTER

Code	Description	M14	M20 M23 M28	S620 S630	SL835 SL840	GT45 GT50 GT70 GT950	Price €
C 8 9 0 7 0 2	Stump buster, drive unit (C890701 required)		●	●	●	●	4.257,00
C 8 9 0 7 0 1	Cutting head for stump buster (diametre 350 mm)		●	●	●	●	2.349,00



TREE TRANSPLANTER

Code	Description	M14	M20 M23 M28	S620 S630	SL835 SL840	GT45 GT50 GT70 GT950	Price €
C 8 9 1 1 0 0	Tree trasplanter Diametre 27 cm			●	●	●	12.000,00
C 8 9 1 1 0 1	Tree trasplanter Diametre 40 cm			●	●	●	16.900,00
C 8 9 1 1 0 2	Tree trasplanter Diametre 75 cm			●	●	●	25.000,00



STUMP GRINDER

Code	Description	M14	M20 M23 M28	S620 S630	SL835 SL840	GT45 GT50 GT70 GT950	Price €
C 8 9 0 5 1 1	Stump grinder, adjustable electro-hydraulic swing control		●	●	●	●	6.666,00

ATTACHMENTS *excavation and drilling*

● = very compatible O = compatible



TRENCHER

Code	Description	M14	M20 M23 M28	S620 S630	SL835 SL840	GT45 GT50 GT70 GT950	Price €
C 8 9 0 2 0 0	Trencher (for normale ground) Digging: depth 60 cm, width 14 cm	O	●	●	●	●	3.894,00
C 8 9 0 2 0 1	Trencher (for normale ground) Digging: depth 90 cm, width 16 cm		●	●	●	●	4.774,00
C 8 9 0 2 0 2	Trencher (for normale ground) Digging: depth 120 cm, width 18 cm		O	O	●	●	5.544,00
C 8 9 0 2 0 3	Heavy duty trencher (for hard ground) Digging: depth 60 cm, width 12 cm		●	●	●	●	4.444,00
C 8 9 0 2 0 4	Heavy duty trencher (for hard ground) Digging: depth 90 cm, width 12 cm		O	●	●	●	5.324,00
C 8 9 0 2 0 5	Heavy duty trencher (for hard ground) Digging: depth 120 cm, width 12 cm		O	O	●	●	6.094,00



MINI-BACKHOE

Code	Description	M14	M20 M23 M28	S620 S630	SL835 SL840	GT45 GT50 GT70 GT950	Price €
C 8 9 0 1 1 6	Mini-backhoe with bucket 25 cm Digging depth 80 cm		●	●	●	●	1.364,00
C 8 9 0 1 1 5	Mini-backhoe with bucket 40 cm Digging depth 90 cm		●	●	●	●	1.474,00
C 8 9 0 1 1 1	Bucket 25 cm for mini-backhoe/backhoe (2d)		●	●	●	●	374,00
C 8 9 0 1 1 2	Bucket 40 cm for mini-backhoe/backhoe (3d)		●	●	●	●	583,00
C 8 9 0 0 0 7	(d) = Bolt-on tooth kit (each)		●	●	●	●	19,80

ATTACHMENTS *excavation and drilling*

● = very compatible ○ = compatible



BACKHOE

Code	Description	M14	M20 M23 M28	S620 S630	SL835 SL840	GT45 GT50 GT70 GT950	Price €
C 8 9 0 1 1 0	Backhoe with bucket 40 cm Digging depth 215 cm			●	●	●	5.544,00
C 8 9 0 1 1 1	Bucket 25 cm for mini-backhoe/backhoe (2d)			●	●	●	374,00
C 8 9 0 1 1 2	Bucket 40 cm for mini-backhoe/backhoe (3d)			●	●	●	583,00
C 8 9 0 1 1 3	Bucket 70 cm for backhoe (5d)			●	●	●	984,00
C 8 9 0 0 0 7	(d) = Bolt-on tooth kit (each)			●	●	●	19,80



AUGER

Code	Description	M14	M20 M23 M28	S620 S630	SL835 SL840	GT45 GT50 GT70 GT950	Price €
C 8 9 0 8 3 0	Auger T1 – standard drive unit (torque 100 Kgm)		●	●	●	●	3.014,00
C 8 9 0 8 3 1	Auger T2 – heavy duty drive unit (torque 150 Kgm)		●	●	●	●	3.344,00

ATTACHMENTS *excavation and drilling*

● = very compatible O = compatible

AUGER HELICAL DRILL

Code	Description	M14	M20 M23 M28	S620 S630	SL835 SL840	GT45 GT50 GT70 GT950	Price €
C 8 9 0 8 4 0	Auger helical drill D. 10 cm – L=100 cm		●	●	●	●	616,00
C 8 9 0 8 4 1	Auger helical drill D. 15 cm – L=100 cm		●	●	●	●	682,00
C 8 9 0 8 4 2	Auger helical drill D. 20 cm – L=100 cm		●	●	●	●	753,00
C 8 9 0 8 4 3	Auger helical drill D. 25 cm – L=100 cm		●	●	●	●	913,00
C 8 9 0 8 4 4	Auger helical drill D. 30 cm – L=100 cm		●	●	●	●	1.122,00
C 8 9 0 8 4 5	Auger helical drill D. 35 cm – L=100 cm		●	●	●	●	1.336,00
C 8 9 0 8 4 6	Auger helical drill D. 40 cm – L=100 cm		●	●	●	●	1.441,00
C 8 9 0 8 4 7	Auger helical drill D. 50 cm – L=100 cm		●	●	●	●	1.523,00

ROCK DRILL

Code	Description	M14	M20 M23 M28	S620 S630	SL835 SL840	GT45 GT50 GT70 GT950	Price €
C 8 9 0 8 8 0	Rock drill D. 15 cm – L=100 cm		●	●	●	●	957,00
C 8 9 0 8 8 1	Rock drill D. 20 cm – L=100 cm		●	●	●	●	1.061,00
C 8 9 0 8 8 2	Rock drill D. 25 cm – L=100 cm		●	●	●	●	1.276,00
C 8 9 0 8 8 3	Rock drill D. 30 cm – L=100 cm		●	●	●	●	1.567,00
C 8 9 0 8 8 4	Rock drill D. 35 cm – L=100 cm		●	●	●	●	1.870,00
C 8 9 0 8 8 5	Rock drill D. 40 cm – L=100 cm		●	●	●	●	2.013,00
C 8 9 0 8 8 6	Rock drill D. 50 cm – L=100 cm		●	●	●	●	2.187,00

EXTENSION FOR AUGER DRILL

Code	Description	M14	M20 M23 M28	S620 S630	SL835 SL840	GT45 GT50 GT70 GT950	Price €
C 8 9 0 8 6 0	Extension for auger helical drill D 10 cm – L=100 cm		●	●	●	●	363,00
C 8 9 0 8 6 1	Extension for auger helical drill D 15 cm – L=100 cm		●	●	●	●	407,00
C 8 9 0 8 6 2	Extension for auger helical drill D 20 cm – L=100 cm		●	●	●	●	456,00
C 8 9 0 8 6 3	Extension for auger helical drill D 25 cm – L=100 cm		●	●	●	●	544,00
C 8 9 0 8 6 4	Extension for auger helical drill D 30 cm – L=100 cm		●	●	●	●	671,00
C 8 9 0 8 6 5	Extension for auger helical drill D 35 cm – L=100 cm		●	●	●	●	808,00
C 8 9 0 8 6 6	Extension for auger helical drill D 40 cm – L=100 cm		●	●	●	●	863,00
C 8 9 0 8 6 7	Extension for auger helical drill D 50 cm – L=100 cm		●	●	●	●	913,00

ATTACHMENTS *forestry work*

● = very compatible ○ = compatible



DUMPER

Code	Description	M14	M20 M23 M28	S620 S630	SL835 SL840	GT45 GT50 GT70 GT950	Price €
C 8 9 0 2 8 0	Dumper 97,5 cm 200 l	●	●	●	●	●	1.100,00
C 8 9 0 2 8 5	Dumper 97,5 cm 400 lt	●	●	●	●	●	1.320,00



WINCH

Code	Description	M14	M20 M23 M28	S620 S630	SL835 SL840	GT45 GT50 GT70 GT950	Price €
C 8 9 1 2 1 0	Winch		●	●	●	●	1.474,00



TREE CLAMP

Code	Description	M14	M20 M23 M28	S620 S630	SL835 SL840	GT45 GT50 GT70 GT950	Price €
C 8 9 0 5 8 0	Tree clamp	●	●	●	●	●	2.387,00

ATTACHMENTS *forestry work*

● = very compatible O = compatible



WOOD CUTTER

Code	Description	M14	M20 M23 M28	S620 S630	SL835 SL840	GT45 GT50 GT70 GT950	Price €
C 8 9 0 5 7 0	Hydraulic wood cutter 7 tons	●	●	●	●	●	1.650,00



BIO-SHREDDER

Code	Description	M14	M20 M23 M28	S620 S630	SL835 SL840	GT45 GT50 GT70 GT950	Price €
C 8 9 0 7 3 0	Bio-shredder		O	●	●	●	5.566,00

ATTACHMENTS *other*

● = very compatible O = compatible



ALUMINIUM RAMPS

Code	Description	M14	M20 M23 M28	S620 S630	SL835 SL840	GT45 GT50 GT70 GT950	Price €
C 8 9 0 7 9 0	Couple of aluminium ramps L=250 cm, W=40 cm		●	●	●	●	1.089,00
C 8 9 0 7 9 1	Couple of aluminium ramps L=300 cm, W=40 cm		●	●	●	●	1.237,00
C 8 9 0 7 9 2	Couple of aluminium ramps L=350 cm, W=40 cm		●	●	●	●	1.298,00
C 8 9 0 7 9 3	Couple of aluminium ramps L=400 cm, W=40 cm		●	●	●	●	1.496,00
C 8 9 0 7 9 4	Couple of aluminium ramps L=450 cm, W=40 cm		●	●	●	●	1.617,00
C 8 9 0 7 9 5	Couple of aluminium ramps L=500 cm, W=40 cm		●	●	●	●	1.716,00

GENERAL CONDITIONS OF SALES

The following general conditions of sale shall govern all deliveries and services by CSF (the "Company" or "Seller"). Any conflicting purchasing conditions of the Purchaser are hereby expressly rejected. Any such purchasing conditions shall apply only if we expressly confirm them in writing.

- 1) **Orders:** No order submitted by the Purchaser shall be deemed to have been accepted by the Company unless the Order Confirmation has been returned duly signed by the Seller's authorised representative.
- 2) **Delivery and despatch:** Delivery dates indicated on the Company order confirmations are provided as an indication only and are in no way a firm commitment on the part of the Company to deliver by a certain date. Consequently, no claim, particularly when an order is delivered late, may be brought against the Company and under no circumstances may damages be claimed due to disputes arising between the Purchaser and its customer. The goods are sold Ex-works Company Warehouse. Unless agreed otherwise, the Purchaser shall pay all transport charges in addition to the price of the products. When goods are transported, the risk (of accidental loss, destruction or deterioration) shall pass to the Purchaser as soon as the Company has delivered the goods to the carrier.
- 3) **Payments:** Unless special terms are agreed, the prices are in EURO (EUR). All invoices are payable to the Company within the period stated on the order confirmations and invoices. Any complaints concerning a supply do not entitle the Purchaser to withhold any payment when due. If the Purchaser fails to make any payment on the due date, the Company may consider the agreement legally cancelled and may request the immediate return of the goods sold, retaining the payments already received as compensation for further damages.
Should the Company decide not to cancel the agreement, the Purchaser will no longer benefit from the previous payment terms and shall settle all outstanding amounts immediately, with the application of delay penalties in accordance with the law and the current interest rate.
- 4) **Warranty:** the warranty lasts 12 months or 1000 working hours (whichever comes first) running from the delivery date to the end user and, in any case, it shall not last for more than 18 months from the date of invoice issued by the Company. In order to notify the Company of the delivery of the machine to the end user, the importer/dealer must fill in the DELIVERY FORM (on the Company's web site www.multione-csf.com) no later than 20 days from the original delivery date of the machine. If it is impossible to access the Company's web site, the importer/dealer shall directly contact the Company's Customer Service (by phone +39 0444 264600 or by e-mail to customer@multione-csf.com) to notify the relevant data. The importer/dealer must also fill in the DELIVERY FORM for those machines which were bought as "demo" units. In this case, the end user will be the importer/dealer himself and the warranty period of 12 months or 1000 hours shall run from the date of the invoice issued by the Company.
Once the machine has been received, the Purchaser shall check its completeness and if it corresponds to the purchase order.
If the goods do not correspond to the purchase order, any non-conformity claim shall be sent to the Company in writing no later than 8 days from the receipt of the goods. The non-observance and/or breach of the above-described procedures will cause the definitive invalidity of the warranty as well as the exclusion of the Company's responsibility for any cost and/or damage. The Company shall manage all data in conformity with the EC Regulation no. 45/2001 concerning "the protection of individuals with regard to the processing of personal data". The Company shall only grant repairs or replacements at its discretion, without charge, due to defects or non-conformities of the product, being it understood that any other type of warranty intervention is expressly excluded and without the Company being obliged to pay any compensation for direct or indirect damages or refund or expenses of any nature and/or reason.
Under the warranty period, on fixed terms, the end user shall inform the importer/dealer, who will provide the scheduled maintenance, according to the specifications of the Operator Manual delivered with the machine.
The scheduled maintenance ("machine check slip") under the warranty period is subject to the following rules: a) The slips have to be carried out on fixed terms (1st within 50 hours, 2nd within 200 hours, the following ones every 150 working hours) with a tolerance of $\pm 10\%$ of the hours indicated on the hour counter; b) Slips have to be performed only by authorized personnel; c) Costs concerning maintenance slips will be charged directly to the end-user (lubricants, filters, travel expenses, labour cost, etc.). The following costs and/or materials are not under warranty, therefore they will be always charged: a) Consumption materials such as oils, filters and lubricants; b) wiring; c) flexible rubber hoses, tyres, rims, brakes, bodywork and parts of the frame exposed to shocks, exhaust mufflers, batteries, buttons, levers and joysticks (if present), lights, lamps, seats, steering wheels, covers, seals for cylinders and all attachments; d) labour costs for maintenance; e) any inspection (intervention) to a machine requested to our technicians; f) The kilometric expenses for round trip of our technicians; g) General expenses (highway, hotels, meals, etc.); h) Transport costs (round trip) of a broken machine, if it is necessary to carry out the maintenance at the Company's facilities; j) Any transport cost for parts and or machines (with or without warranty coverage).
The replacement under warranty of the damaged parts will be not free of charge in the following cases: a) Non-returning of replaced parts, carriage paid to the Company, within 15 days from receipt of the new one; b) Damage due to misuse and/or inaccurate use of the machine and/or damages put beyond performances that are higher than the ones granted by the Company.
The warranty shall become invalid and not be enforceable in case of: a) the Purchaser's payment not meeting the agreed terms; b) the damage is due to negligence, wrong maintenance or inaccurate use of the machine; c) the machine has been dismantled or unduly opened by non-authorized the Company personnel; d) the buyer equips the machine with options, attachments and hydraulic connections not approved by the Company; e) the machine has been modified on the electrical, mechanic and/or hydraulic plants, without any authorization by the Company; f) the machine check slips are not regularly made; g) use of non-original spare parts; h) use of oil or fuel not suggested by the Company; i) use of the machine not in conformity with the Operator Manual delivered by the Company; j) Unforeseen events.
The removal of safety devices, with which the machine is equipped, will automatically invalidate warranty and any liabilities of the Company. In case of the Buyer's negligence in notifying and requesting immediately the Company's assistance after discovering a defect, the Buyer will be responsible for the increase of damage if still using the machine while broken or defected. The Company disclaims any liability if, due to any operating trouble and/or accidental breakage of components', the machine cannot be used causing "missed production" nor the Company shall be obliged to supply substitutive machines or to refund transport costs or any other expenses. If the Purchaser does not accept the above-mentioned warranty conditions, he shall return the machine, carriage paid, to the Company no later than 8 days after receiving it as long as the machine is still new and used in no way (the use of the machine will imply the whole acceptance of these warranty conditions). Anyway the Company will inspect the machine and, if necessary, restore the machine debiting the respective amount.
- 5) **Insurance:** the Company sells the machine without insurance and the Purchaser shall at his own expenses take out an insurance policy for theft and fire.
- 6) **Descriptions and specifications:** drawings, diagrams, measurements, weights and any other technical data indicated in the Company catalogues, prices lists, operator manuals and offers are approximate only. The Company reserves the right to make modifications at any time without prior warning.
- 7) **Test:** all machines are tested at the Company's warehouse before delivery.
- 8) **Retention of title clause:** The goods delivered to the Purchaser shall remain the property of the Company until the price has been paid in full. However, during the whole period in which the retention of title on the goods lasts, the risks relating to the delivered product, with particular reference to damage, loss or theft or damage caused by the product itself, will be entirely borne by the Purchaser from the date of delivery. In case of total or partial non-payment of the price when due, the Company is entitled to obtain physical possession of the goods without notice at the Purchaser's expense and risk. During the whole period in which the retention of title on the goods lasts, the Purchaser must insure the goods against all risk of damage or liability caused or experienced by the goods. If the Purchaser does not observe any of the obligations provided for by this clause, the Company may demand the immediate and full payment of the price.
- 9) **Complaints and actions:** the Purchaser shall assert the warranty in the Court, within twelve months of the delivery of the machine. It is excluded that the Purchaser can claim compensation for damages suffered in reliance of delivery, included in respect of non-use of the machine during the time taken for repairs under warranty. The Purchaser may not suspend payments even in the case of arisen disputes or claims, or may bring action against the Company if it has not settled his debt.
- 10) **Change of price:** the Company is entitled to apply, instead of the price contractually agreed, the price resulting from the Company price list in force at the date of the notice for "machine ready for delivery". If the new increased price is 10% higher than the price contractually agreed, the Purchaser will have the power of withdrawal, to be notified in writing within 10 days from the receipt of the notice of the increase
- 11) **Liability:** the Company declines all responsibility for any accident and subsequent injury to persons or property that might occur during the use of machines of his production.
- 12) **Legal disputes:** Any dispute, controversy or claim arising out of or relating to this General Conditions of Sale or the breach, termination or invalidity thereof or any sale shall be finally settled by arbitration in accordance with the Arbitration Rules of the Wien Commodity Exchange, which the Parties declare to know and approve. The arbitration proceeding shall be held in Wien in the English language and any cost thereof, including reasonable attorneys' fees, shall be for the non-prevailing Party. As a partial derogation to what set forth above, the Company shall, however, be entitled at its own discretion to submit any dispute to the jurisdiction and venue of the competent Courts of the place where the Purchaser has its principal place of business.

NOTES

[illegible]

www.multione-csf.com



C.S.F. S.r.l.
via Palù 6/8 36040 Grumolo delle Abbadesse, Vicenza (Italy)
ph. +39 0444 264600 fax +39 0444 389260
info@multione-csf.com